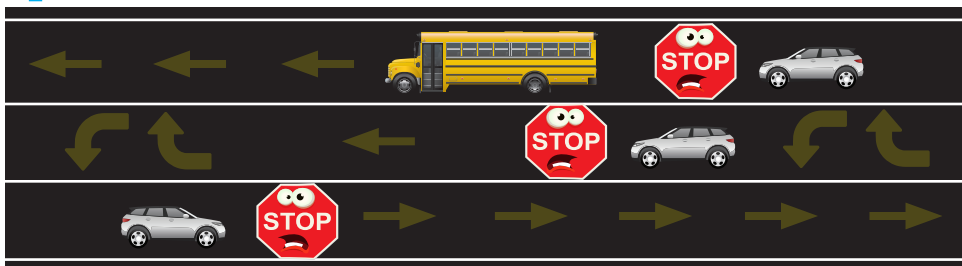
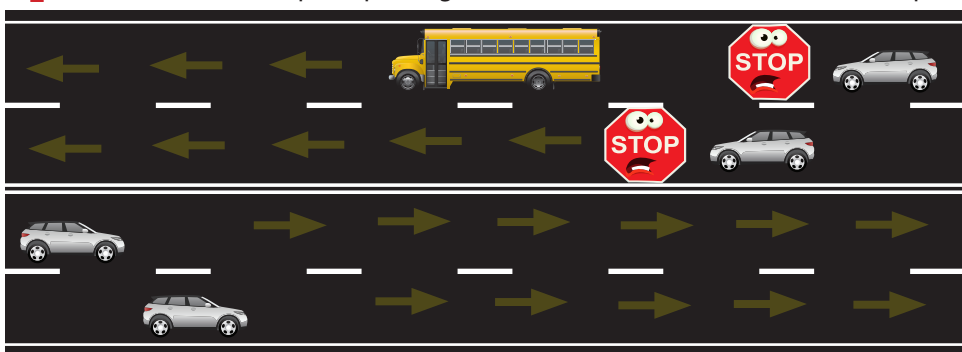


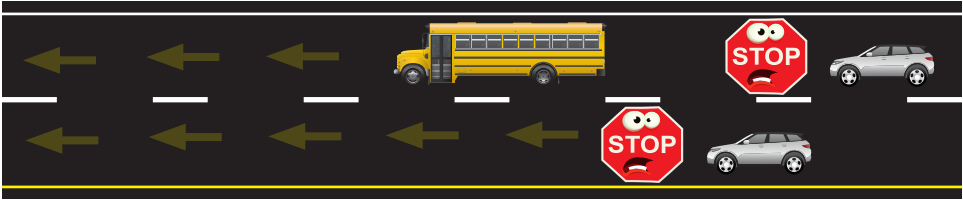
**↑ 2 LANE ROADWAY**  
When school bus stops for passengers, all traffic from both directions must stop.



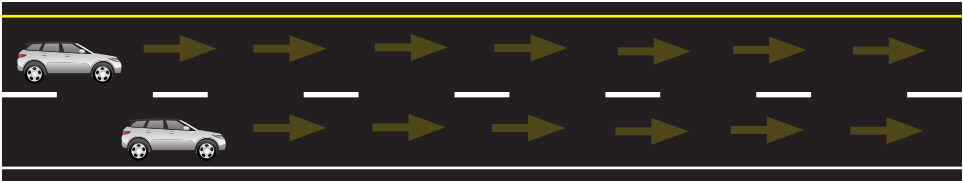
**↑ 2 LANE ROADWAY + CENTER TURN**  
When school bus stops for passengers, all traffic from both directions must stop.



**↑ 4 LANE ROADWAY NO MEDIAN SEPARATION**  
When school bus stops for passengers, all traffic from both directions must stop.

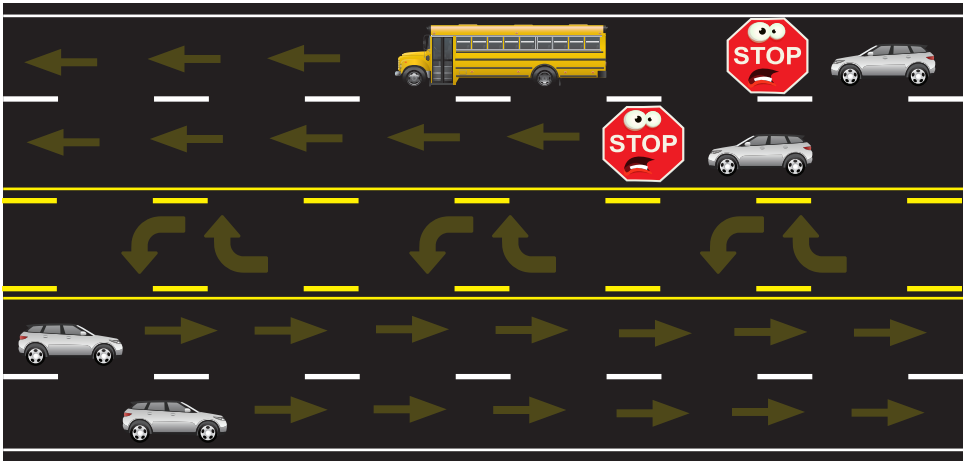


## DIVIDED HIGHWAY



### ↑ 4 LANES + DIVIDED HIGHWAY + MEDIAN SEPARATION

When school bus stops for passengers, only traffic following the bus must stop.



### ↑ 4 LANES + ROADWAY + CENTER TURN

When school bus stops for passengers, only traffic following the bus must stop.

